


VersaWorks Profile Installation Procedure

* ICC Profiles made by GretagMacbeth ProfileMaker

Note: This profile is only compatible with VersaWorks 1.11 or later. If you have an earlier version, update your software using the Online Update feature.
VersaWorks will not install the profile if there is an entry with the exact same name in Media Explorer. If you want to update any of the existing profiles, make sure to delete them first from Media Explorer. Please note that an updated profile may produce slightly different print results than your current profiles. It is recommended to save your existing profile if you have an absolute need to reproduce a job previously printed with your current profile.

Please follow the instructions provided below to install the profiles in Roland VersaWorks.

1. Start Roland VersaWorks and open the **Media Explorer** by navigating to **Media > Media Explorer** menu.
2. Click **Load from File** () and open the folder where the profile is located.
3. Select the profile (files with **.rml** extension) and click **Open**.
4. Verify that you are installing the right profile and click **OK**. A dialog box may be displayed prompting if you want to overwrite any existing ICC profile. Click **Yes** to overwrite.
5. Click **Close** button to close **Media Explorer**.
6. The profile is now available for selection in the **Media Type** field in **Job Settings** or **Queue Properties** dialog.

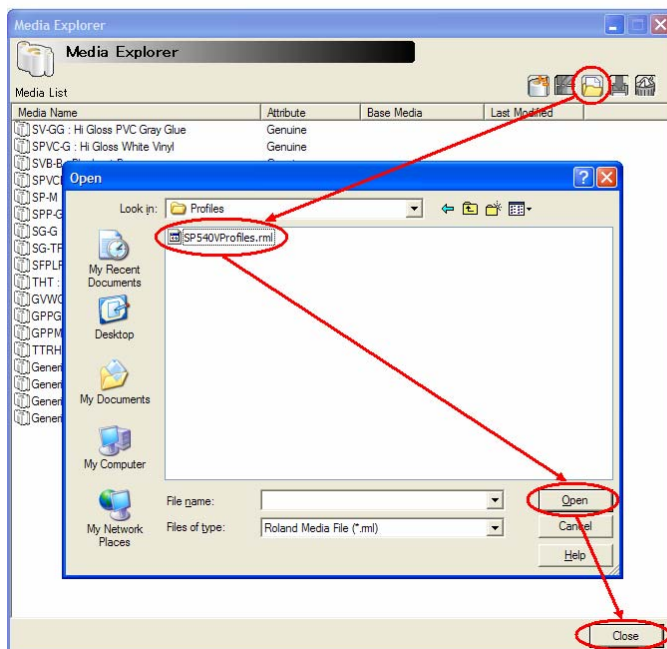


Fig. 1 – Media Explorer